



PLANTERRA

DESIGN & BUILD



Geleceđi Planlıyoruz Bugünü Tasarlıyoruz

Gelişen Teknoloji ile  
Sürdürülebilirlik ile  
Doğaya Saygı ile  
Gelecek için



**Dizajniramo danas, planiramo budućnost.**

PLANTERRA Arhitektura je pejzažno-arhitektonska firma osnovana u Turskoj, koja svoje dugogodišnje iskustvo prenosi na međunarodno tržište.

Naše putovanje, započeto 1994. godine, razvilo se u snažnu i integrisanu strukturu kroz proizvodnju biljaka, projektovanje i realizaciju projekata. Aktivne operacije u Turskoj predstavljaju našu tehničku osnovu i proizvodnu snagu.

Naša kancelarija u Srbiji deo je vizije širenja ovog znanja na međunarodne projekte. PLANTERRA pruža održiva, funkcionalna i specifična rešenja prilagođena svakom prostoru.

Naš cilj je stvaranje dugotrajnih prostora koji spajaju estetiku, funkcionalnost i komfor, unapređujući kvalitet života.

**We design today, we plan the future.**

PLANTERRA Architecture is a landscape architecture firm founded in Turkey, carrying its years of experience into the international arena.

Our journey, which began in 1994, has evolved into a strong and integrated structure through plant production, project design, and implementation services. Our ongoing operations in Turkey form the technical foundation and production strength of our company.

Our Serbia branch represents a key step in expanding this expertise into international projects. PLANTERRA delivers sustainable, functional, and site-specific landscape solutions across various scales.

Our goal is to create lasting spaces that combine aesthetics, functionality, and comfort while enhancing quality of life.

# TESLİM EDİLEN PROJELER

## KENTSEL TASARIM ve PEYZAJ MİMARİ

OTEL

AVM

HASTANE

MİLLET BAHÇELERİ

REZİDANS

REKREASYON ALANI

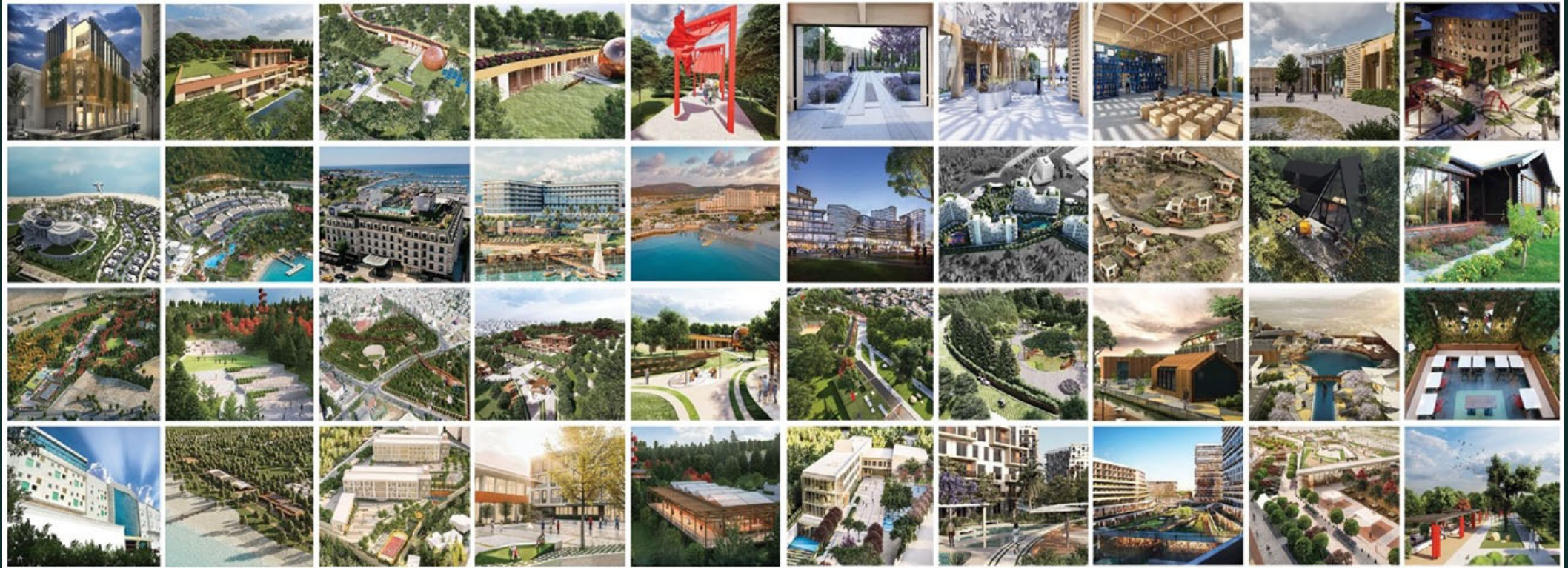
SOSYAL PROJELER

PARK

KIYI REKREASYON ALANI

FABRİKA

MADEN SAHASI



# URBAN DESIGN AND LANDSCAPE ARCHITECTURE REFERENCES

- 
- Bilgili Holding\_Terra Türkbükü, 2026 ( Bodrum/Muğla/Türkiye, Türkbükü Residence\_7 Private Villas)  
Atak Group, Sheikh Zayed Child Protection Agency, 22,000 m<sup>2</sup> 202 (Bahçelievler/Istanbul/Türkiye)  
Miller Holding\_The Kensington Heights, 36,500 m<sup>2</sup> -2025 (Kumasi, Ghana, West Africa\_Mixed Use\_Hotel\_Residential\_Commercial)  
Eskişehir Amatem Hospital, 9.500 m<sup>2</sup> 2025 (Tepebaşı/Eskişehir/Türkiye)  
Limak Construction\_Cyprus Golf & Resort Hotel, 258,000 m<sup>2</sup> - 2024 (Bafra/Turkish Republic of Northern Cyprus) 5 Stars  
Gime Luxury Hotel, 72.000m<sup>2</sup> - 2024 (Gime/Turkish Republic of Northern Cyprus) 5 Stars  
UG Architecture\_Pendik Public Garden 32,000 m<sup>2</sup> 2004 (Pendik/ Istanbul,Türkiye)  
Van Yüzüncü Yil University, 457.000 m<sup>2</sup> - 2023 (Tuşba/Van/Türkiye)  
Nivo Istanbul - Neba Construction, 31.000 m<sup>2</sup> - 2022 (Küçükçekmece/Istanbul)  
DAP\_Yeni Levent School, 12.000 m<sup>2</sup> - 2022 (Seyrantepe/istanbul)  
DAP\_Ormanköy School, 6.000 m<sup>2</sup> - 2022 (Çekmeköy/istanbul)  
Rixos Premium Bodrum, 48.600 m<sup>2</sup> - 2022 (Bodrum/Muğla/Türkiye) 5 Stars  
Menteş Construction, Hamidiye Public Garden, 255,000 m<sup>2</sup>, 2001 (Central/Sivas/Türkiye)  
Sivas Provincial Administration, City School Museum, 7,000 m<sup>2</sup>, 2021 (Central/Sivas/Türkiye)  
Öz-Ak Rezidans, 8,500 m<sup>2</sup>, 2020 (Central/Sivas/Türkiye)  
Gümüşhane Üniversitesi 12,000 m<sup>2</sup> ,2020 (Central/Gümüşhane/Türkiye)  
Tatvan Amatem Hospital 6.500 m<sup>2</sup> ,2020 (Tatvan/Bitlis/Türkiye)  
Tanap, 2,500 m<sup>2</sup>, 2019 (Kilanz/Sivas/Türkiye)  
Votarantim Cement Factory Entrance, Administrative Offices, Production Facility 11,000 m<sup>2</sup> 2019 (Merkez/Sivas/Türkiye)  
Hafik Municipality Lake Surroundings Recreation Area, 35.000 m<sup>2</sup> 2019 (Hafik/Sivas/Türkiye)  
Hafik Municipality Lake Surroundings Multipurpose Wooden Structure, 6,000 m<sup>2</sup> 2019 (Hafik/Sivas/Türkiye)  
Cumhuriyet University Lake Surroundings Recreation Area 150,000 m<sup>2</sup> 2018 (Central/Sivas/Türkiye)  
Cumhuriyet University Ata Tepe 1,000 m<sup>2</sup> 2018 (Central/Sivas/Türkiye))  
Zara Municipality Çamlık Tepesi Recreation Area 21,000 m<sup>2</sup> 2018 (Zara/Sivas/Türkiye)  
Ağaoğlu Mansions 2,500 m<sup>2</sup> 2018 (Bakırköy/Istanbul/Türkiye)  
Aktaş Plant Office Building, 750 m<sup>2</sup>, 2018 (Bayındır/Izmir/Türkiye)  
Aktaş Plant, Tuyap Exhibition Area, 45 m<sup>2</sup>, 2018 (Büyükçekmece/Istanbul/Türkiye)  
Demir Export Iron Mine Site Office Spaces 2,100 m<sup>2</sup> 2017 (Divriği/Sivas/Türkiye)  
Votorantim Cement Factory Landscape Restoration Site 5,000 m<sup>2</sup> 2017 (Central/Sivas/Türkiye)  
Kangal Thermal Power Plant, 15,000 m<sup>2</sup>, 2016 (Kangal/Sivas/Türkiye)  
Yıltaş Construction, Eğri Köprü Konakları 2, 6,500 m<sup>2</sup>, 2016 (Central/Sivas/Türkiye)

PLANTERRA  
DESIGN & BUILD



PLANTERRA  
DESIGN & BUILD

LANDSCAPE PROJECT

AND

IMPLEMENTATION EXAMPLES



KIBRIS

GOLF & RESORT OTEL LIMAK  
CYPRUS GOLF & RESORT HOTEL



PLANTERRA  
DESIGN & BUILD





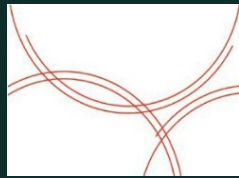
# GİRNE LUXURY OTEL



PLANTERRA  
DESIGN & BUILD



Proje Alanı Perspektifi  
Project Area Perspective

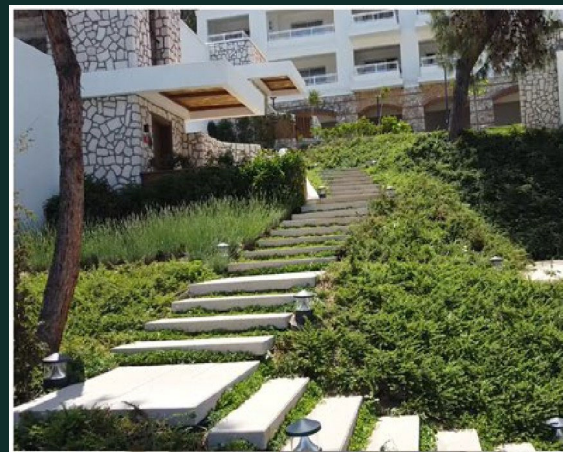
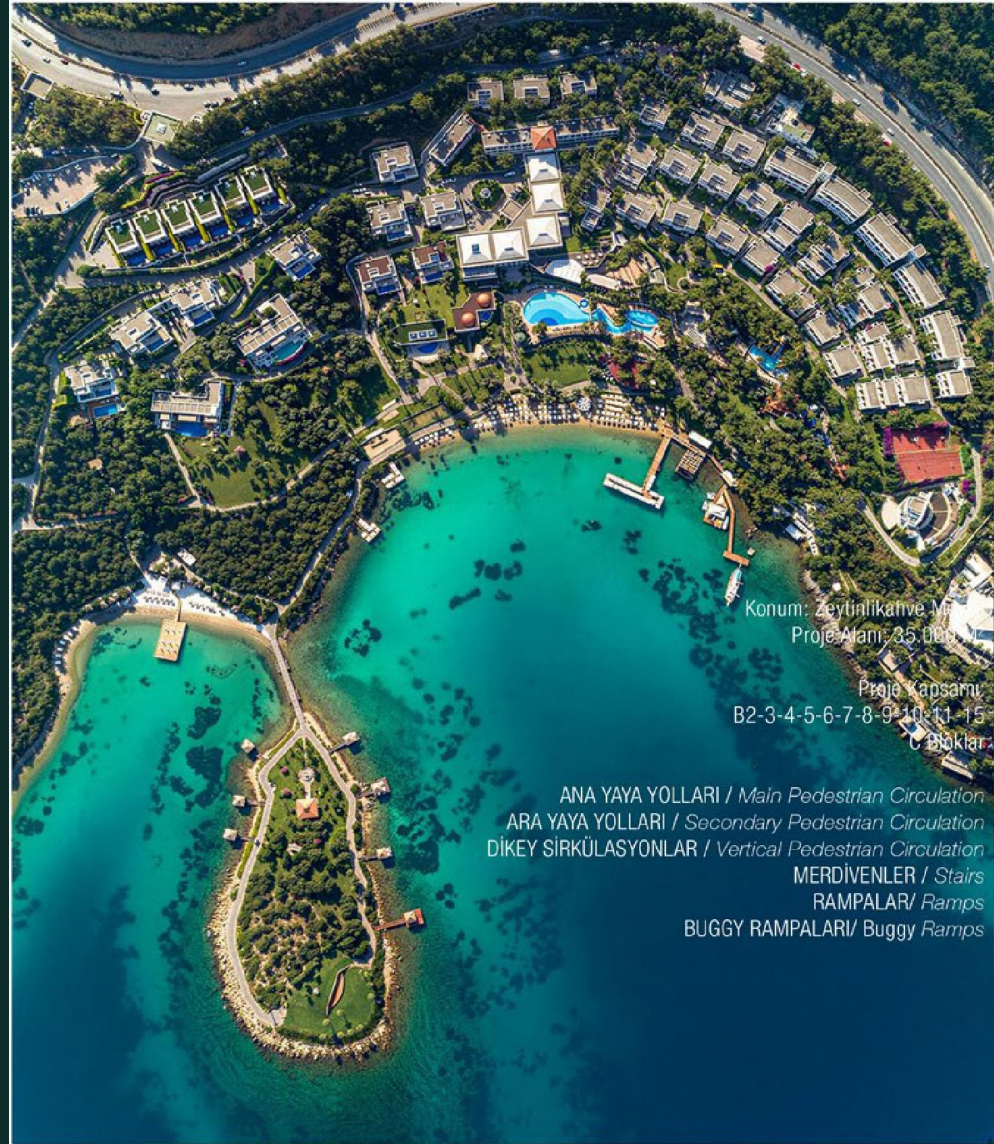


# THE KENSINGTON HEIGHTS



PLANTERRA  
DESIGN & BUILD





Our project, which won the "Best 5 Star Luxury Resort 2022 and Best Design Hotel 2022" awards at the International Travel Awards, is the first phase of the project work that includes the renovation of the structural and plant landscape areas of Rixos Premium Bodrum Hotel, located on the Milas-Bodrum highway in Torba Bay. With the renovation of the existing hotel and accommodation structures, all the open space circulations and gardens in the hotel were designed. Due to the very steep slope and dense circulation in the area, floating stairs on the green ground to reduce the hard ground effect and green rips that increase the green ground in pedestrian circulations were designed. In the context of inclusive design, the entire circulation has been re-solved so that disabled, children and elderly individuals can reach the accommodation units with their buggy and other vehicles. A design concept that integrates more with the natural environment in which it is located, aims to increase the green area ratio and to experience the whole hotel open space operation in a richer way has been implemented



# NiVO İSTANBUL



PLANTERRA  
DESIGN & BUILD



PEYZAJ MİMARİ TASARIM // 2022  
LANDSCAPE ARCHITECTURE DESIGN

Cineydoğu Cephesinden Bakış  
View from Southeast





# HAMİDİYE PUBLIC GARDEN



PLANTERRA  
DESIGN & BUILD





# SIVAS CITY SCHOOL MUSEUM



PLANTERRA  
DESIGN & BUILD





**PLANTERRA**  
DESIGN & BUILD

OUR PLANT

PRODUCTION AREAS



PLANTERRA  
DESIGN & BUILD



İZMİR



BURSA

SIVAS



# Our Plants



# *Our Plants*

